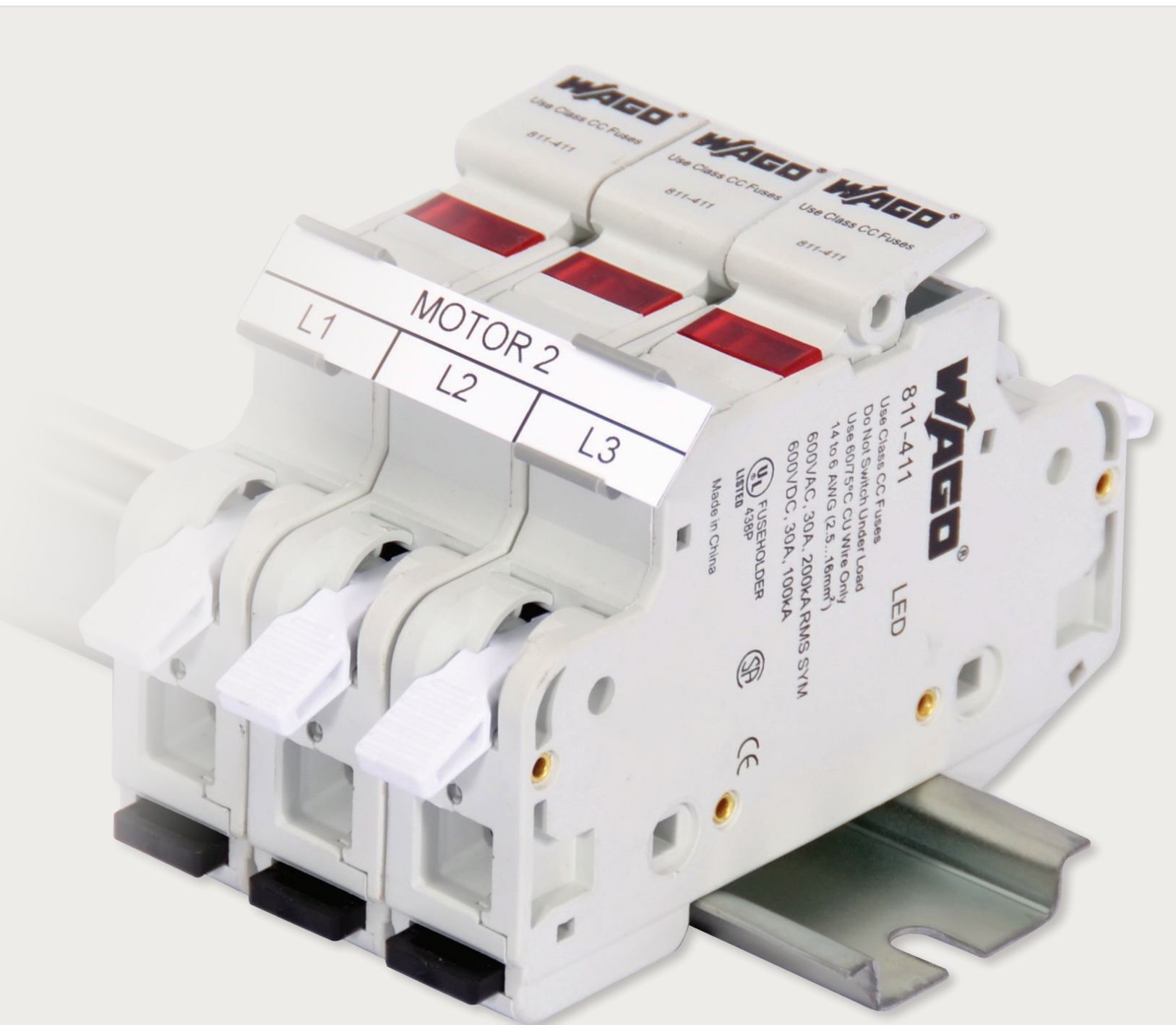


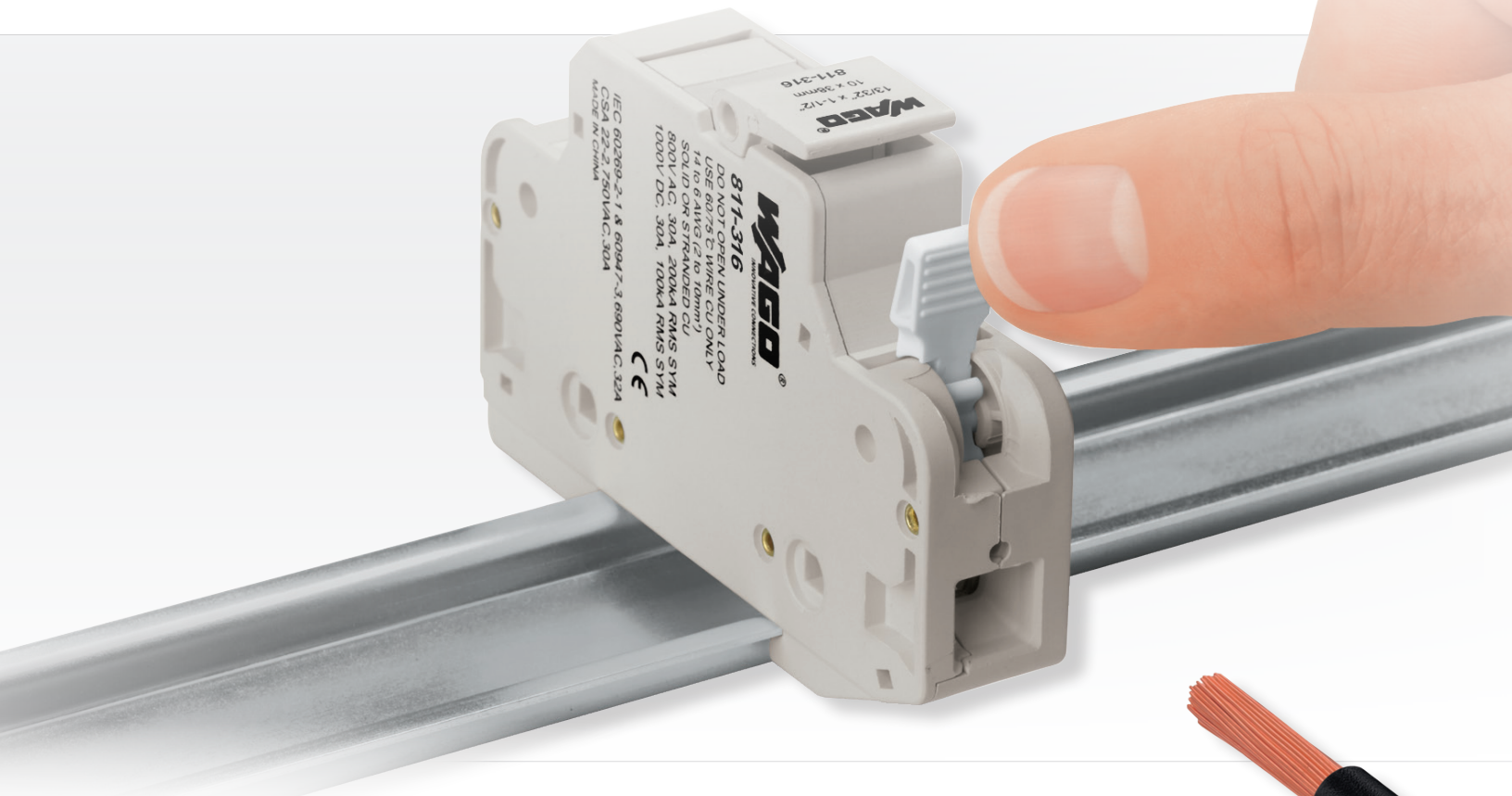


Class CC and 10x38 mm Fuse Holders 811 Series



811 SERIES FUSE HOLDERS

WITH CAGE CLAMP® AND LEVER-ACTUATION

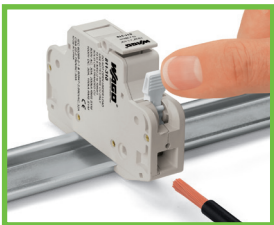


Complete with CAGE CLAMP® technology, the 811 fuse holder maintains WAGO's legacy of reliability and ease of use. These Class CC and Midget style fuse holders provide maintenance-free, vibration-proof, and corrosion-resistant connections. Lever actuation makes for a user-friendly experience, further simplifying installation in applications such as motor control, power distribution, HVAC, solar, and more.

Highlights:

- Maintenance-free CAGE CLAMP® connection technology
- IP20 finger safe/touch safe
- LED indication available (even as low as 24 VDC and as high as 1,000 VDC)
- Available as 1-, 2- or 3-pole (or use coupling kit to create multi-pole configurations)
- Easy DIN-rail mounting
- Quick and easy fuse replacement

Lever Operation:



Finger Actuation
with no tool required



Screwdriver Option
used to pivot lever up



Screwdriver Option
used to close lever



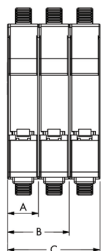
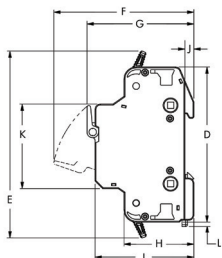
Mounting Clip
for easy removal from DIN-rail

Technical Data:

Item No.	Description	Fuse Type	No. Poles	Current Rating	Voltage Rating AC	Voltage Rating DC
811-310	1-pole midget fuse holder	Midget (10x38 mm)	1	30 A (100 kA SCCR)	750 V	1,000 V
811-320	2-pole midget fuse holder		2			
811-330	3-pole midget fuse holder		3			
811-311	1-pole midget with indication		1		90 V ... 600 V	115 V ... 600 V
811-321	2-pole midget with indication		2			
811-331	3-pole midget with indication		3			
811-314	1-pole midget - 24 VDC indication		1		–	24 V
811-316	1-pole PV fuse - 1,000 VDC	PV Fuse (10x38 mm)	1	30 A (100 kA SCCR)	–	1,000 V
811-317	1-pole PV fuse - 1,000 VDC indication		1			
811-410	1-pole CC fuse holder	Class CC	1	30 A (200 kA SCCR)	600 V	600 V
811-420	2-pole CC fuse holder		2			
811-430	3-pole CC fuse holder		3			
811-411	1-pole CC with indication		1		90 V ... 600 V	115 V ... 600 V
811-421	2-pole CC with indication		2			
811-431	3-pole CC with indication		3			
811-414	1-pole CC with 24 VDC indication		1		–	24 V

Accessories:

Item No.	Description	Item No.	Description
285-442	Marking Adapter for Continuous Strip	811-612	Coupling Kit for 12-poles
793-5501	WMB Marker Card	811-472	2-way Jumper Bar, I _n 63 A, 1000 V
2009-110	Continuous Marking Strip	811-473	3-way Jumper Bar, I _n 63 A, 1000 V
210-136	Test Plug	811-4**	Jumper Bar Available from 2 - 12 poles
206-204	Crimp Tool (24 ... 12 AWG)	811-482	12-way Jumper Bar, I _n 63 A, 1000 V
206-216	Crimp Tool (10 ... 6 AWG)	811-471	Supply Terminal, 2 AWG, 600 VAC, 1000 VDC
216-547	Twin Ferrule (2 x 10 AWG; L2 = 12 mm)	811-458	57-way cuttable jumper bar, I _n 63 A, 1000 V
216-546	Twin Ferrule (2 x 12 AWG; L2 = 12 mm)	811-457	Cover for cut end of jumper
216-545	Twin Ferrule (2 x 14 AWG; L2 = 12 mm)		



Dimension	mm	(in.)	Dimension	mm	(in.)
A	17.3	(0.68)	G	59.7	(2.35)
B	34.6	(1.36)	H	39.0	(1.54)
C	51.9	(2.04)	I	55.2	(2.17)
D	87.0	(3.43)	J	5.0	(0.20)
E	104.9	(4.13)	K	47.4	(1.87)
F	78.3	(3.08)	L	2.5	(0.10)

Approvals:

Midget (10 x 38 mm)

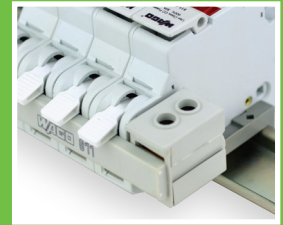
- UL Listed E350426
- CSA Certified C22.2, class 6225, File 255010
- IEC 60269-1, 60947-3

Photovoltaic (10 x 38 mm)

- UL Listed E351154
- IEC 60269-1, 60947-3

Class CC

- UL Listed E350426
- CSA Certified to C22.2, class 6225, File 255010



Supply Terminal

connect up to 2 AWG input wire with required jumper bar



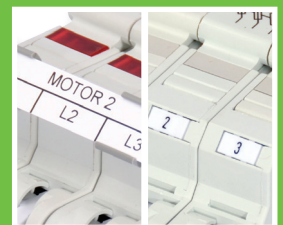
Jumper Bar

for quick and convenient commoning



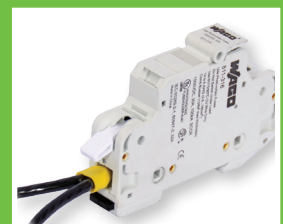
Coupling Kit

for creating multi-pole configurations



Marking

Convenient identification with WMB markers or use marking adapter to accept the continuous marking strip



Twin Ferrule

for connecting more than one conductor (accepts up to 10 AWG twin ferrule)



WAGO Corporation
N120 W19129 Freistadt Road
Germantown, Wisconsin 53022
Telephone: 800 / DIN Rail (346-7245)
Fax: 262 / 255-3232
info.us@wago.com
www.wago.us

Canada
WAGO Corporation
Tel. 800/DIN Rail (346-7245)
Fax 262/255-3232
www.wago.ca

Mexico
WAGO Corporation
Queretaro
Tel. 001/800/309/5975
+ 52/442/221/5946
Fax + 52/442/221/5063
www.wago.mx

WAGO is a registered trademark of WAGO Verwaltungsgesellschaft mbH.

"Copyright – WAGO Kontakttechnik GmbH & Co. KG – all rights reserved. The content and structure of the WAGO Websites, catalogs, videos, and other WAGO media are subject to copyright. The dissemination or changing of the content of these pages and videos is not permitted. Furthermore, the content may neither be copied nor made available to third parties for commercial purposes. Also subject to copyright are the images and videos that were made available to WAGO Kontakttechnik GmbH & Co. KG by third parties."